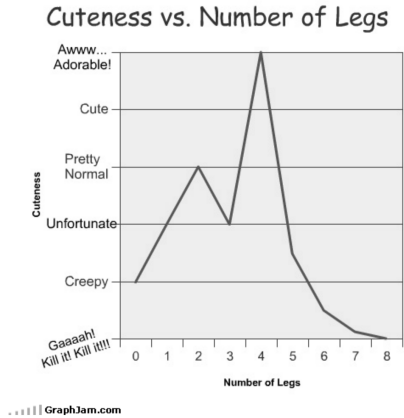


M10C Unit 4 - Relations and Functions

Graphs of Relations



POS Checklist

- Describe a possible situation for a given graph.
- Sketch a possible graph for a given situation.
- Identify independent and dependent variables in a given context.

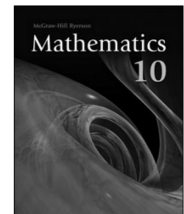
And now for something completely different...

New Notes!

- You now get a nice, double sided piece of paper with an outline of everything you need to know for the unit.

- I will go through problems with you on the board still, but you just need to participate and watch.

- This will allow for more time to practice questions out of the textbook and for me to work with you one on one.



Everybody is going to need one of these everyday.

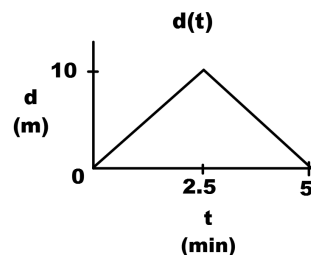
Every Graph tells a Story

Being able to interpret what a graph means is an important skill. Graphs compare two variables:

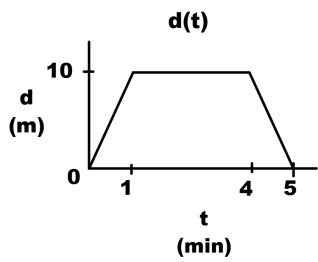
Independent Variable: the variable which is selected (in science, the manipulated variable, in math, the x-variable).

Dependant Variable: the variable that depends on the independent variable (in science, the responding variable, in math, the y-variable).

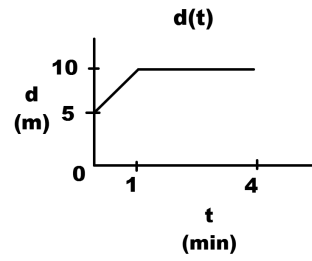
Here is a graph of distance as a function of time:



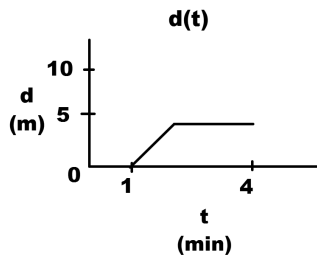
What could this graph describe?



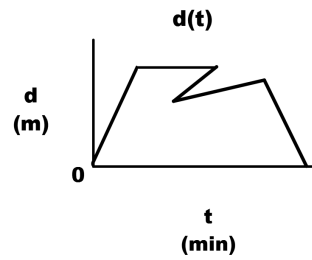
What could this graph describe?



What could this graph describe? What affect does the y-int have?



What could this graph describe? What affect does the x-int have?



Marty! What could this graph describe?

Practice: Page 274-278 #1-13 and 15

a) Draw the graph show in the video clip of "How I Met Your Mother." Make sure to label axes. Draw an approximate line of the hot to crazy relationship.